



2021

ANNUAL REPORT

DEAR PARTNERS,

We are very happy to present our achievements in 2021.

2021 has been another challenging yet rewarding year for Baan Dek Foundation (BDF). The COVID-19 pandemic continued, and though the pandemic had mostly been contained in Thailand in 2020, the second to fourth waves of infections that occurred in 2021 had a significant negative impact on the country. COVID-19 cases resulted in lockdowns and school closures, while the ongoing economic crisis disproportionately affected marginalized populations, and in particular the children and families we work with. To support these communities, BDF continued providing much needed emergency relief.

In spite of the difficulties faced during the year, we are proud to report that BDF made significant achievements in providing access to education, health, and child protection services to disadvantaged children in urban slums and construction site camps.

On one hand, throughout the year, we provided **direct support** to over **1,650 children** and their families living in 56 communities. Among other achievements, BDF provided tailored case management support to 268 cases, and supported over 1,300 children in accessing formal education.

On the other hand, we made significant progress with our **systemic change** initiative: several more companies in the construction sector fully committed to adopting practices and tools developed by BDF to improve the well-being of communities living on construction site camps. Over **10,000 workers** and their families benefited from the initiative in 2021.

BDF's 2021 achievements were made possible thanks to the support of our partners, supporters, and friends. On behalf of the entire BDF team and the children and families we work with, we extend our sincere gratitude to all who have contributed to our work.

Our very best,

Acha Sripaurya

BDF Chairperson

Magali du Parc Crosta

BDF Executive Director





THE CHALLENGE

There are approximately **60,000 children** living in construction site camps with slum-like conditions in Thailand. These children are often left unattended in these severely hazardous living environments while their parents are at work on construction sites. They experience limited access to essential services and are at high risk of abuse and exploitation. BDF aims to ensure that vulnerable children, particularly children within the construction sector, have sustainable access to education, health, and child protection services.

Since the outbreak of COVID-19 in Thailand in February 2020, migrant families living in construction site camps have become even more vulnerable. The second to fourth waves of the pandemic that began in January to August 2021 deepened these inequalities, and the number of COVID-19 cases continues to increase. According to a 2021 survey, over half the participants are living extremely precariously due to a lack of savings. This survey was the largest ever conducted by Baan Dek Foundation, with over 400 beneficiaries participating. Approximately 66% do not have enough money to last two days or less if they lose their jobs, 40% reported they are concerned about not having enough food, and 64% are in debt. Lack of income has caused tensions in communities to rise, leading to an increase in violence and other issues.

OUR WORK

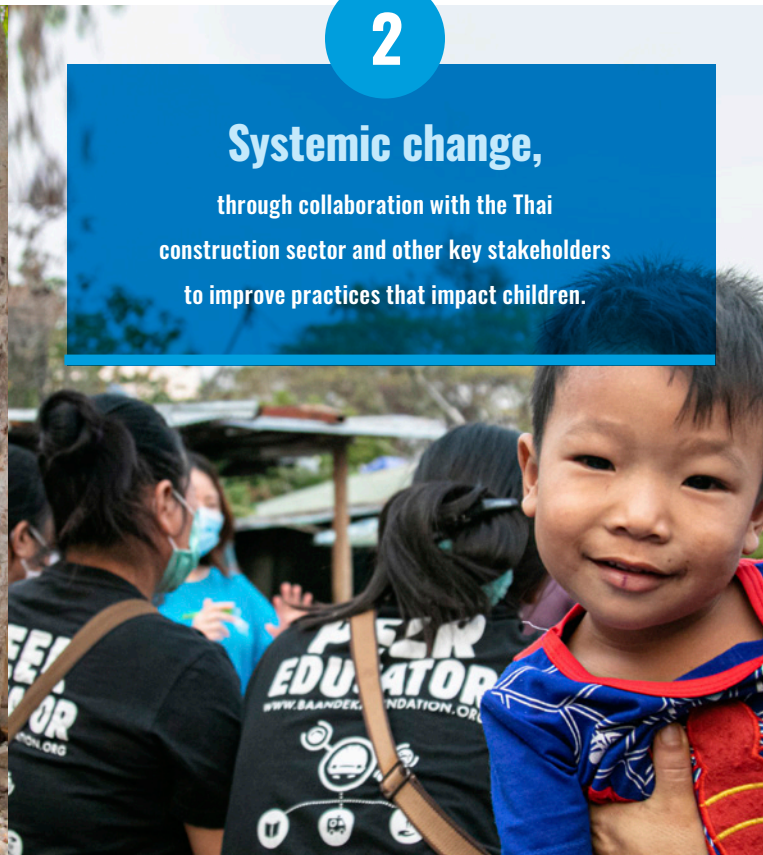
By embracing international child protection standards, BDF is committed to enriching the development, health, and access to opportunities of every child. BDF works to improve the fundamental well-being of all vulnerable children living in Thailand through:

1

Direct impact,
through child protection,
child development, and community
empowerment activities.

2

Systemic change,
through collaboration with the Thai
construction sector and other key stakeholders
to improve practices that impact children.



Due to the ongoing COVID-19 pandemic, this year BDF continued providing emergency assistance to beneficiaries. BDF worked to respond to immediate needs, while maintaining our focus on delivering direct support and achieving systemic change.

DIRECT IMPACT

BDF provides direct support to children and families living in construction site camps through complementary field programs. Due to COVID-19 and related social distancing measures, BDF adjusted regular activities but continued individual case management activities and provided emergency support, to maintain long-term goals. When possible, BDF resumed additional activities, many of which were adjusted to fit with the current situation in Thailand.

2021 Reach



1,650+

children inhabit the communities that received direct support in 2021.¹



56

construction site camps, urban slums, or vulnerable communities were supported, and 7 of these are new communities in 2021.²



6,700+

workers inhabit the communities that BDF directly reached with community support in 2021.

¹This figure does not include children in schools that BDF works with, as schools remained closed for the majority of the year and implementing activities was not feasible due to the social distancing measures in place.

²Including 46 construction and transport site camps, and 10 urban slums. 5 camps closed this year.



EDUCATION

92%
1300+
1,174
137
235

of children aged 4 to 15 from construction site camps and urban slums are currently enrolled into public schools across Chiang Mai and Bangkok.

children received support to access school including school equipment, enrollment, and uniforms.

hours of non-formal education were delivered in communities in Bangkok and Chiang Mai, despite periods when BDF could not implement group activities in camps.

vulnerable women were empowered with life coaching, financial literacy training, upskilling, and/or training on developing an action plan over the course of 257 hard and soft skill workshop sessions, provided through the Dao Women's Empowerment Project in Chiang Mai.

Peer Educators, trained to support community access to services, were in regular contact with BDF throughout the COVID-19 lockdown periods and helped BDF maintain surveillance, understand changing needs in communities, and distribute aid.

trained to support community access to services, were in regular contact with BDF throughout the COVID-19 lockdown periods and helped BDF maintain surveillance, understand changing needs in communities, and distribute aid.

BDF provides activities that promote child development, prepare school-aged children for integration into Thai public schools and prevent drop-out, and provide essential life skill education. BDF also provides training to vulnerable women and to community members to become Peer Educators, who support children and families in their own communities to access services. Due to the pandemic, schools were closed for significant periods and BDF continued working closely with Peer Educators to monitor the situation in communities. BDF focused on helping children access educational opportunities and on building the capacity of Peer Educators.



92%

of children have been vaccinated according to Thai standards³ in Chiang Mai and Bangkok camps and urban slums.

14

communities improved their infrastructure to support child protection, including the development of Community Safe Spaces (CSS) or WASH facilities.

650

children benefited from community infrastructure improvements.

³Required vaccines include: BCG, Hepatitis B, Diphtheria/Tetanus/Pertussis, Polio, Mumps/Measles/Rubella, Japanese Encephalitis.

BDF improves water, sanitation, and hygiene (WASH) facilities in communities, provides health information to families, and supports children in accessing vaccinations and healthcare. Families living in construction site camps have become extremely vulnerable to disease, as they live in crowded living environments and have been in lockdown for weeks or months at a time. BDF focused on improving the sanitation of living environments and providing access to health services.



CHILD PROTECTION

71

new households were enrolled in BDF's Individual Support Project to receive support through tailored case management.

268

cases were supported by Social Advisors through tailored case management. This support included immediate counseling and referrals as needed.

130

cases remained active as of December 31, 2021.

BDF provides one-on-one, tailored case management, including direct and immediate protection to families identified as at risk. Due to the impact of COVID-19, the number of cases BDF manages at any one time has increased significantly. BDF focused on providing immediate relief and support, while also boosting parental capacity and supporting the most at-risk children on a one-to-one basis.



COVID-19 EMERGENCY SUPPORT

34

Youth Peer Educators led 320 non-formal education and sport sessions to support child development in their communities in the absence of BDF staff. 70 non-formal education kits were distributed to support the implementation of the sessions.

65

Community Safe Agents (BDF-trained adults on specific missions) have supported the implementation of the Emergency Response Plan.

3,050+

food sets were delivered with the support of the Community Safe Agents and Youth Peer Educators to children and families in communities Chiang Mai and Bangkok. 810 tailored food sets were additionally provided to individual cases, for a total of over 3,860+ food sets.

500+

calls were made by BDF Social Advisors to Peer Educators, Community Safe Agents, parents, and community leaders in Chiang Mai and Bangkok to monitor the needs of community members.

8,070

hygiene sets were distributed with the support of the Community Safe Agents and Youth Peer Educators to children in communities between April and December, compared to 5,540 from 2020.

2,215

flyers were distributed to families in communities in Chiang Mai and Bangkok to raise awareness on preventing domestic violence and family separation.

109

counseling sessions were provided to 50 children and families struggling with challenges related to the impact of the pandemic.

1,092

additional hygiene and food sets were provided to 130 households supported through the Individual Support Project.

280

nursery kits were donated to support families with young children.

To address critical needs, BDF continued providing donations of food, hygiene products, and cleaning supplies to all families, and implemented public health awareness campaigns.

SYSTEMIC IMPACT

BDF achieves systemic change in the Thai construction sector by working with major property and construction companies to improve living conditions for labor migrants and their families. During 2021, BDF continued to work closely with construction company leaders to implement measures to prevent the spread of the virus and support the well-being of families facing lockdowns and work stoppages. During the severe lockdown measures in Bangkok during July and August, pioneer companies partnering with BDF ensured that all workers received three meals a day, implemented social distancing measures, built extra hand washing stations, maintained COVID-19 surveillance mechanisms, and proactively worked with BDF to ensure the needs of children and families, especially infants and pregnant women, were met through donations.

FRAMEWORK FOR ACTION

BDF's joint research paper with UNICEF, "Building Futures in Thailand" (2018), examines the living conditions of migrant workers living in construction site camps in Thailand and aims to contribute to the spread of good practices in the private sector. The research presents the Framework for Action as 12 recommendations that can be implemented by construction companies to improve living conditions for migrant workers and their children. The Framework recommendations have four focus areas - infrastructure, health, rights and safety, and education - based on the needs commonly identified across camps and regulations in Thailand. Each of the aforementioned indicators of BDF's impact for 2021 is aligned to the 12 recommendations.



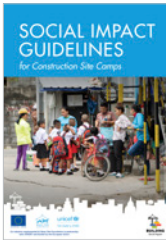


BUILDING
Social Impact

SOCIAL IMPACT TOOLS

BDF is working to train staff from companies that are early adopters of the Framework for Action. Staff are trained on the Framework and the complementary Tools developed. These Tools have been developed in collaboration with construction sector leaders and tested in the field. These Tools are:

1



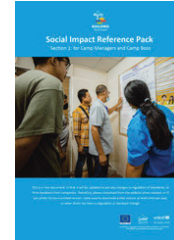
Social Impact Guidelines,
explaining how to implement
the Framework.

2



Self-Assessment Tool,
for construction site camps to
check the status of camp living
conditions.

3



Reference Packs,
providing practical steps for camp
managers, camp bosses, workers,
and their children.

Companies can use these to independently improve camp living conditions and ensure children can access basic public services. These tools will be publicly launched in early 2022 on:

www.buildingsocialimpact.org

BDF aims to form a network of construction sector advocates and champions to scale out the Framework. Our main strategic partners in 2021 include UNICEF Thailand and Visavapat, Syntec, and Magnolia Quality Development Corporation Ltd. (MQDC), early adopters of the Framework for Action.





MILESTONES IN 2021

39

agreements with real estate/construction companies cumulatively since beginning work in the construction sector.

4

construction companies (Syntec, Visavapat, CM Rimdoi, Thai Polycons) have committed to implementing the Framework in their camps.

1

MoU signed with Magnolia Quality Development Corporation Ltd., declaring their commitment to implementing the Framework with their contracting construction companies.

30

camp bosses from 28 camps across greater Bangkok and 2 company management staff from 2 of the early adopters of the Framework are halfway through the Framework training course.

28

camps in greater Bangkok have been fully assessed with the Self-Assessment Tool and action plans were drafted based on the priority needs in each camp.

10,000

workers (approximately) have been reached by the Systemic Impact initiative.



CASE STORY

A., a 7 year-old Cambodian boy, lives in a construction site camp in Bangkok, Thailand with his older sister and parents. His father currently works as a construction worker, and his mother works as the head caretaker of the camp (Mae Baan). A.'s parents have been working for the same construction company for seven years; this company is a pioneer company under BDF's Systemic Impact strategy and is an early adopter of the Framework.

BDF met A.'s family in late 2018. At the time, A. was living in another camp, which did not have a community safe space (CSS), a safe environment for children and their families to learn, play, and connect. Since moving to his current camp in 2021, A. has been able to happily use the CSS that was jointly established by the pioneer company and BDF. The CSS has essential information and a mapping of public services, a TV which allows for remote learning, and space for companies to implement non-formal education sessions. A. and his family also live more comfortably in this camp, as it provides better housing conditions, has proper waste management systems, and has gender segregated toilets for safety.

Since BDF's training with the company, A.'s mother has observed increased engagement from the company to improve living conditions for camp residents and their children. For example, during the height of severe restrictions during the pandemic, the company installed internet routers in the camp to mitigate risks related to disrupted learning and allow children like A. to join online classes.

Thanks to the joint interventions from the pioneer company and BDF, A. and his family have access to a safety net that would have otherwise been inaccessible to such a marginalized population. A. can now join remote classes and has access to a clean and child-friendly living environment, which supports his development and access to the future opportunities that he so rightfully deserves.



RECOGNITION

In 2021, BDF and its partner, Dao Ethical Gifts, were recognized for innovative work that positively impacts children and families in Thailand.

Japanese Award for Most Innovative Development Project (MIDP)

BDF was awarded first prize for the Japanese Award for Most Innovative Development Project (MIDP) in October 2021 for its project “Access to Healthcare for Migrant Families in Thai Construction Site Camps.” The MIDP Award is a competitive grant program offered through the Global Development Awards Competition, administered by the Global Development Network (GDN) and funded by the Ministry of Finance, Government of Japan. The award focuses on projects already in development, and that have the potential to positively impact disadvantaged groups. BDF submitted its project under Theme 1 (Universal health coverage and COVID), and received a grant of 20,000 USD.



dao[★]

ETHICAL GIFTS

ดาว เอธิคอล กิฟส์

ASEAN Social Enterprise Development Programme (SEDP) Prize

Dao Ethical Gifts (DEG), a social enterprise model powered by BDF, was awarded the ASEAN Social Enterprise Development Programme (SEDP) Prize in November 2021. DEG was initially selected to participate in the ASEAN-SEDP, which offered capacity building, mentorship, networking opportunities, and other support from July to October. The ASEAN-SEDP is offered by the ASEAN Foundation, with support from GIZ on behalf of the German Federal Ministry for Economic Cooperation and Development (BMZ) and SAP. Following the program, a select few organizations, including DEG, were provided with 7,000 USD in seed funding.



ASEAN FOUNDATION



www.daoethicalgifts.com



2021 EXPENSES

 **858,346€**

2021 DONATIONS + 2020 REMAINING FUNDS

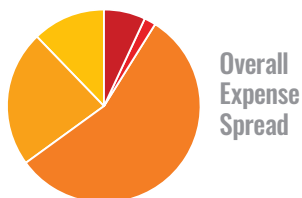
 **912,023€**
Total 2021 donations: 699,081 €

INDIVIDUALS SUPPORTED

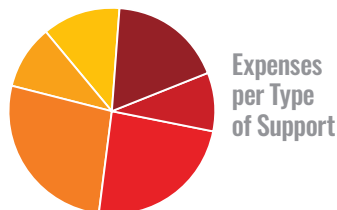
 **1,650+**
children
 **6,700+**
workers

2021 was an exceptionally challenging year for Thailand and for BDF due to the health and economic crisis. This resulted in a decrease in revenue and the need to increase expenditure related to emergency support to beneficiaries. Despite the difficulties faced, BDF is now back to its pre-COVID path of sustainable growth.

ALLOCATION OF FUNDS

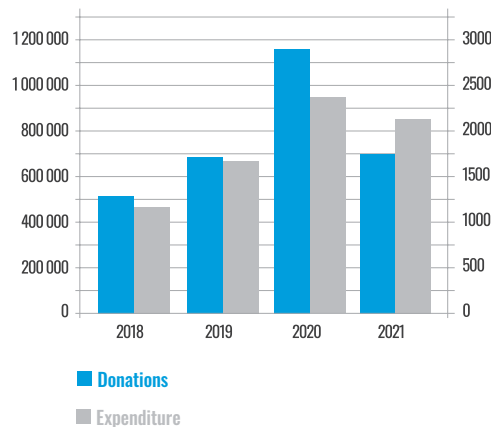


- 7% COVID-19 Emergency Support (Chiang Mai)
- 2% COVID-19 Emergency Support (Bangkok)
- 56% Regular Activities (Chiang Mai)
- 23% Regular Activities (Bangkok)
- 12% Overhead



- 18% Child Protection*
- 9% COVID-19 Emergency Support
- 24% Child Development
- 27% Community Empowerment / Systemic Impact
- 10% Women Empowerment
- 12% Overhead

*Incl. COVID-19 individual support



INSTITUTIONAL AND CORPORATE PARTNERS

FINANCIAL, TECHNICAL OR IN-KIND PARTNERS CONTRIBUTING TO BDF'S MISSION

Amadeus Asia, Artelia Foundation, Bangkok Mothers & Babies International, Blue Fork restaurant partners, Benevity, Cartier Philanthropy, Danone Thailand, Edrington, Embassy of Australia in Thailand, Embassy of France in Thailand, Embassy of Switzerland in Thailand, Firetree Trust, GQ Thailand, IVL Foundation, Kids Home America, Kids Home France, Kids Home Italia, Kids Home UK, Kindernothilfe, L'Oreal Thailand, Manan Trust, Mazars Thailand, NIST International School, PATTARAPHAN, Reed Smith, SF Cinema, Strategies & Corp, Sunline Foundation, Teenworks Foundation, TrustLaw, Work Together Foundation, World Childhood Foundation, UEFA Foundation for Children, UNICEF Thailand, Valveva

On behalf of the entire BDF team, we would like to warmly thank so many other individuals and organizations that provided us with support in 2021.

CONTACT US

www.baandekfoundation.org / info@baandekfoundation.org



In alignment with BDF's Child Safeguarding and Protection Policy and Thailand's Personal Data and Protection Act, all individuals, including children - with their parent's consent - have provided authorization for BDF to use their images for non-commercial external communications.

